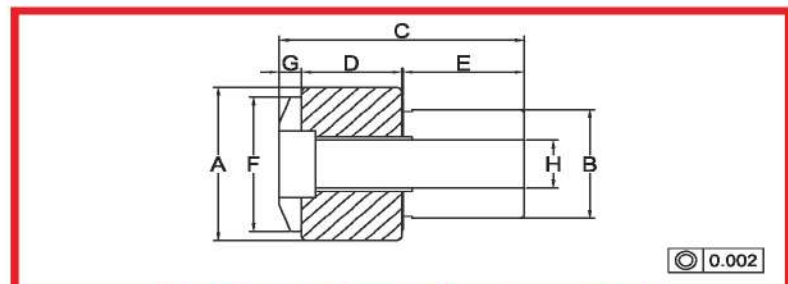


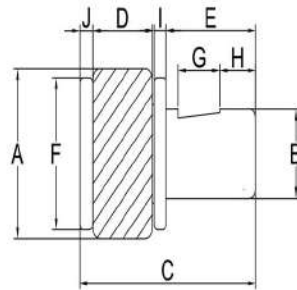
JIA規格 平板共軛型 Plate Conjugate (mm)

A	B	C	D	E	F	G	H
12	7.0	8.0	20.0	4.7	4.5	0.5	1.3
35	19.05	18.0	54.0	14.0	10.0	1.0	4.0
62	30.0	28.0	58.0	14.5	9.0	1.0	2.0
70	35.0	35.0	96.0	29.0	10.0	1.5	3.5
90	45.0	30.6	95.0	30.0	12.0	1.5	2.0



JIA規格 中空型 hollow type (mm)

A	B	C	D	E	F	G	H
10	5.5	12.9	7.0	5.0	9.4	0.8	2.5
12	7.0	16.0	7.5	8.4	11.0	1.0	3.4
14	9.0	18.2	8.0	9.0	13.0	1.2	4.5
16	8.5	22.2	9.1	11.0	14.0	2.0	3.5
16	9.0	22.2	9.1	11.0	14.0	2.0	3.5
19	10.0	28.4	12.4	13.4	17.0	2.0	4.4
19	10.4	28.4	12.4	13.4	17.0	2.5	4.4
22	14.0	28.4	12.4	13.4	20.0	2.5	5.3
24	14.0	28.4	12.4	13.4	20.0	2.5	5.3
24	15.0	32.0	15.7	15.0	19.8	2.5	6.8
26	14.0	31.4	14.8	14.0	24.0	2.0	5.3
26	15.0	32.0	15.7	15.0	19.8	2.5	6.8
26	14.0	29.0	12.4	14.0	24.0	2.5	5.3
30	16.5	36.0	14.4	19.0	28.0	2.5	6.8
30	17.0	36.0	14.4	19.0	28.0	2.5	6.8
32	20.0	40.0	18.2	20.0	27.8	3.0	8.5
35	18.0	41.0	14.4	24.0	31.0	2.5	6.5
35	18.3	41.0	14.4	24.0	31.0	2.5	6.5
35	20.0	40.0	18.2	20.0	27.8	3.0	8.5



◎ 0.002

JIA規格 標準 standard (mm)

A	B	C	D	E	F	G	H	I	J	D	I
6	3.02	11.0	3.3	5.3	5.5	3.0	1.3	0.7	0.7		
10	5.40	21.0	6.0	11.0	9.0	5.0	2.5	2.5	1.5	7.5	1.0
12	7.00	22.0	8.0	11.0	11.0	6.0	1.5	1.5	1.5		
14	8.00	24.0	8.0	12.5	12.0	6.0	3.0	1.5	1.8		
16	8.50	25.0	9.0	13.0	13.0	6.0	5.0	1.5	2.2		
16	10.0	24.0	8.0	15.5	15.0	6.0	3.0	1.5	2.0		
19	10.4	29.3	10.0	15.0	17.0	6.0	5.0	1.5	2.5		
20	13.0	28.7	11.6	14.0	18.0	7.0	5.0	0.0	2.7	ATC	40#
22	11.5	32.8	11.5	18.5	18.0	7.0	9.0	1.5	2.5	ATC	40#
22	12.0	30.3	13.3	16.6	17.5	6.0	5.0	2.5	2.5		
24	13.0	30.8	13.5	14.0	19.0	7.0	5.0	2.0	2.5		
24	13.0	45.2	12.0	28.0	22.0	0.0	14.0	2.0	3.0		
26	14.0	29.5	10.0	12.0	24.0	6.0	9.0	1.5	2.5	搖臂	40#
28	14.0	36.9	12.0	20.0	24.0	9.0	6.0	2.0	2.7	ATC	50#
30	16.5	40.5	16.5	23.5	23.5	10.0	4.0	3.0	3.5		
35	18.0	55.0	18.0	31.7	33.0	10.0	9.0	2.0	3.0		
35	18.0	37.8	16.0	16.2	25.0			2.5	2.8	搖臂	50#
40	23.5	56.3	22.0	33.0	33.5	10.0	9.0	4.0	3.0		
47	27.8	54.3	26.3	29.5	39.5	10.0	9.0	3.0	3.0		
52	29	74.0	30.3	41.3	43.6	10.0	10.0	4.5	4.0		
90	45	95.0	30.7	54.0	80.0	16.0	11.5	5.0	5.0		